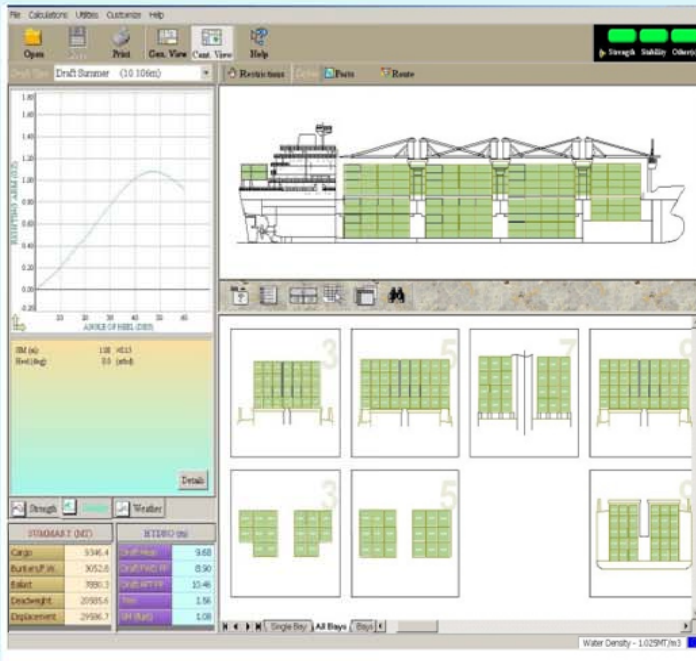
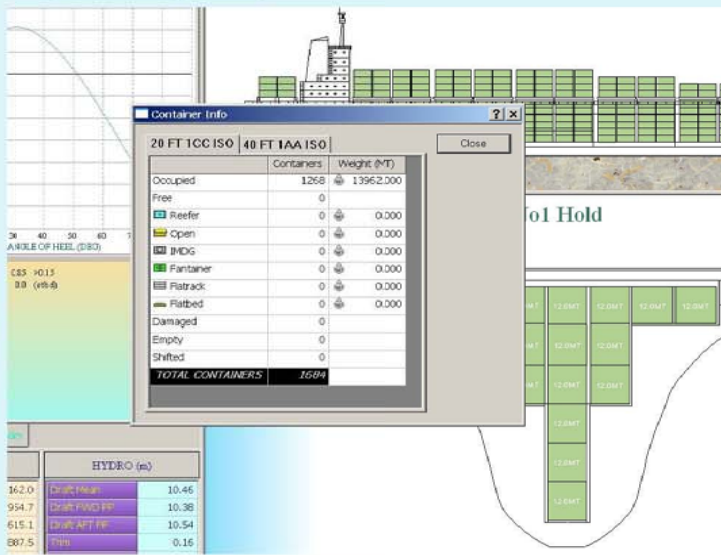


## CONTAINER

One screen covers the entire program



### Summary view



### Standards functions for container

- Hydrostatic information table(Draft,trim,LCB...)
- Intact Stability information table-IMO Criteria
- Weather Criteria information table
- Longitudinal Strength calculation table(S.F., B.M)
- Summary of cargoes information table
- Forward draft limit
- Calculation of Propeller immersion
- Load Line selection(Summer,Winter,Tropical...)
- Restrictions(Draft,Trim,S.F.,B.M., Air Draft)
- Automatic unit conversion(Metric-British)
- Water density calculation
- Various unit selection for density of cargo
- Actual loading graph of the vessel
- On line help and error/warning messages
- Explorer to manage loading conditions(copy,paste, recycle bin, directories....)
- Import-Export loading conditions
- Reporting facilities(Print out tables and graphs)
- Container View -Bays View
- Mode 20/40 or other type
- Pre-planning /loading/discharging/change
- Ports-Owners-Shippers/Receivers/Route
- Cargo info: in bay/in tier
- Sum info: in bay/in tier
- Facilities:
  - Check container's ID
  - Search
  - Check undefined ports

### Optional utilities for Container

- Ballast Water Management module
- Display and printout Draft Survey Report
- Auto-Trim module(for ballast-bunkers)
- Damage Stability Calculation
- Grounding/ Refloating calculation