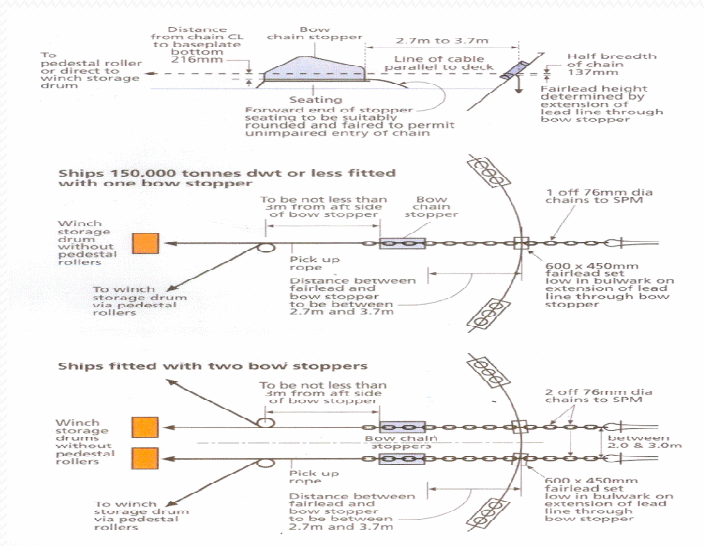


# Single Point Mooring

## New CHEVRON SPM Requirements for Tankers

OCIMF Recommendations (4<sup>th</sup> Edition May 2007)

### TECHNICAL - ADVISORY



- Owners of ships under construction before 2009 are encouraged to consider fittings bow chain stoppers with the recommendation for new ship. Chevron terminals have recently introduced new requirements for tankers calling their SPM facilities.

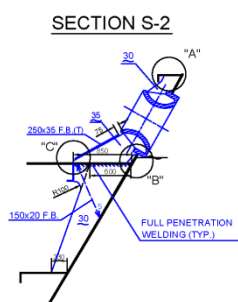
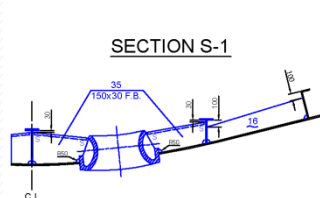
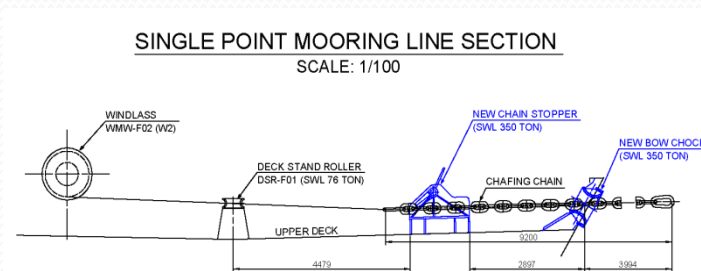
A brief description of the differences between new and existing ships is as follows :

### Effepi Advisory/Consultancy Services

Effepi provides advice on ship-specific by receiving account many similar cases in the past and prepares the necessary plans for the smooth and fast approval by the classification society

SWL of Bow Chain Stoppers and associated;

- Distance of bow chain stoppers inboard from bow fairlead;
- Number of pedestal rollers used to guide the mooring pick-up rope;
- Angle of change of direction around all Rollers shall not exceed 90°



For further information please contact:

**Effepi Mon Ltd**  
 Sotiros Dios 7,  
 185 35 Piraeus - Greece  
 Tel.: +30 2104274100-1  
 Fax.: +30 2104274102  
 Email: [effepi@effepi.gr](mailto:effepi@effepi.gr)  
 Website: [www.effepi.gr](http://www.effepi.gr)