

# Polar Code Requirements

**TAKE CARE DON'T RUN!**



## Effepi Advisory/Consultancy Services

*Effepi provides advice on ship-specific by receiving account many similar cases in the past and prepares the necessary plans for the smooth and fast approval by the classification society*

## **TECHNICAL - ADVISORY**

Polar Water Operational Manual(PWOM) provides guidelines and procedures, in compliance with MARPOL Annexes I, II, IV, and V as amended by Resolutions MEPC.264(68) and MEPC.265(68) and in compliance with Resolutions MSC.385(94) and MSC.386(94).

Apart from necessary manuals(PWOM, OAR, ADDENDUM LOADING MANUAL, SOPEP, GARBAGE...), in order for the Polar certificate to be issued the ship should be comply, according to POLAR CODE, with following requirements:

- Life Saving Equipment
- Countermeasures for the ice accretion
- Emergency food and water
- Navigation/ Communication
- Fire-fighting equipment

We are able to coordinate before purchasing any new equipment as described above.

**For further information please contact:**

**Effepi Mon Ltd**  
 Sotiros Dios 7,  
 185 35 Piraeus – Greece  
 Tel.: +30 2104274100-1  
 Fax.: +30 2104274102  
 Email: [effepi@effepi.gr](mailto:effepi@effepi.gr)  
 Website: [www.effepi.gr](http://www.effepi.gr)

ADDENDUM – LOADING MANUAL "For Ship Operating in Polar Waters"	VESSEL NAME (IMO No. ....)	PAGE 16 / 64
---	-------------------------------	-----------------

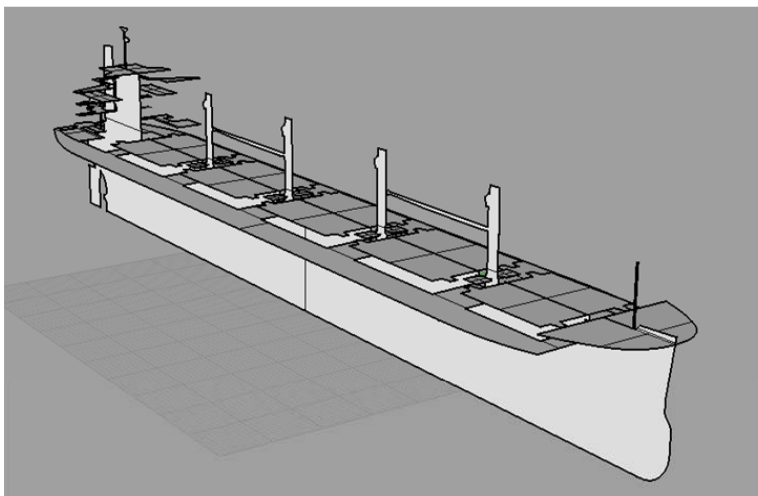


Figure 3.10: 3D representation of the areas used for the calculation of ice.