

Windmill Blade Loading on Board



Effepi provides advice on ship-specific by receiving account many similar cases in the past and prepares the necessary plans for the smooth and fast approval by the classification society

TECHNICAL - ADVISORY

Windmill Blade vary in size. One of the longest turbine blades produced currently has a length of 123m and diameter of up to 5meters.

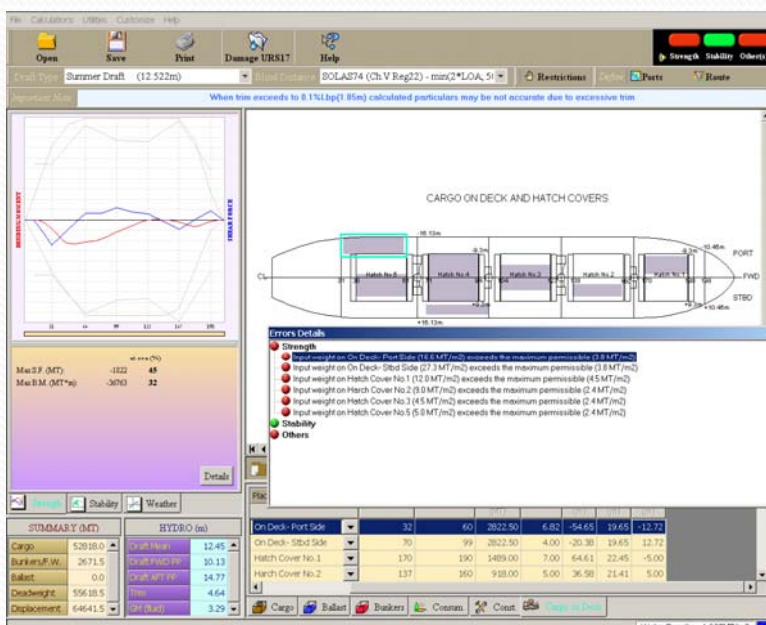
Because of the dimensions it is very important, apart from checking the strength of the deck and on hatch covers, the stability of the ship, it is to study the way of secure and a feasibility study to decide on the number of windmill blades than can be carried on the vessel.

Once the feasibility proposal is accepted by Client, the next step is to development the necessary drawings, analysis and reports for obtaining approval from Class.

Indicatively a series of calculations must be done initially, such as:

- seafastening design calculation;
- Stowage plan for windmill blades on the main deck and hatch covers;
- securing arrangements;
- strength checks,;
- cargo frame design for windmill blades
-etc

C.A.M.E.L. Loading Program – Cargo on Deck



For further information please contact:

Effepi Mon Ltd
 Sotiros Dios 7,
 185 35 Piraeus – Greece
 Tel.: +30 2104274100-1
 Fax.: +30 2104274102
 Email: effepi@effepi.gr
 Website: www.effepi.gr